



## 15 INCH SUBWOOFER

See TABULAR DATA notes for details, half space = floor-mounted

### CONFIGURATION

**Subsystem:**

Transducer	Loading
SUB 1x 15 in cone	Vented

**Operating Mode:**

Amplifier Channels	External Signal Processing
Single-amp LF	DSP w/1-way filter

### PERFORMANCE<sup>1</sup>

**Operating Range:** 27 Hz to 150 Hz

**Nominal Beamwidth:**

Horz	360°
Vert	360°

**Axial Sensitivity (SPL):**

LF (whole space)	92 dB	27 Hz to 150 Hz
(half space)	98 dB	27 Hz to 150 Hz

**Input Impedance (ohms):**

Nominal	Minimum
LF 8	7.6 @ 165 Hz

**High Pass Filter:** High Pass=>28 Hz, 12 dB/octave Butterworth

**Accelerated Life Test:**

System	LF 89 V	1000 W @ 8 ohm
--------	---------	----------------

**Calculated Axial Output Limit (SPL):**

	Average	Peak
LF (whole space)	122 dB	128 dB
(half space)	128 dB	134 dB

### ORDERING DATA

Description	Part Number
EAW MWS15 Black	0032875-90

## FEATURES

- Designed with the drummer in mind
- Addresses the unique environment of onstage low frequency demands
- Angle in conjunction with time delay offers numerous focusing options
- Enclosure is a high-quality, high-volume, ultra-versatile stage and small venue subwoofer
- Flexibility to be configured in a huge range of different combinations

## DESCRIPTION

The latest offering in EAW's MicroWedge Series of stage monitor products is the MicroSub. It is a direct result of extensive research and field evaluation with FOH/monitor engineers, musicians, leading touring companies and audio consultants. The single 15-inch enclosure is a high-quality, high-volume, ultra-versatile stage and small venue subwoofer, designed to address the unique environment of onstage low frequency demands, sonic territory that often goes ignored by stage monitor setups.

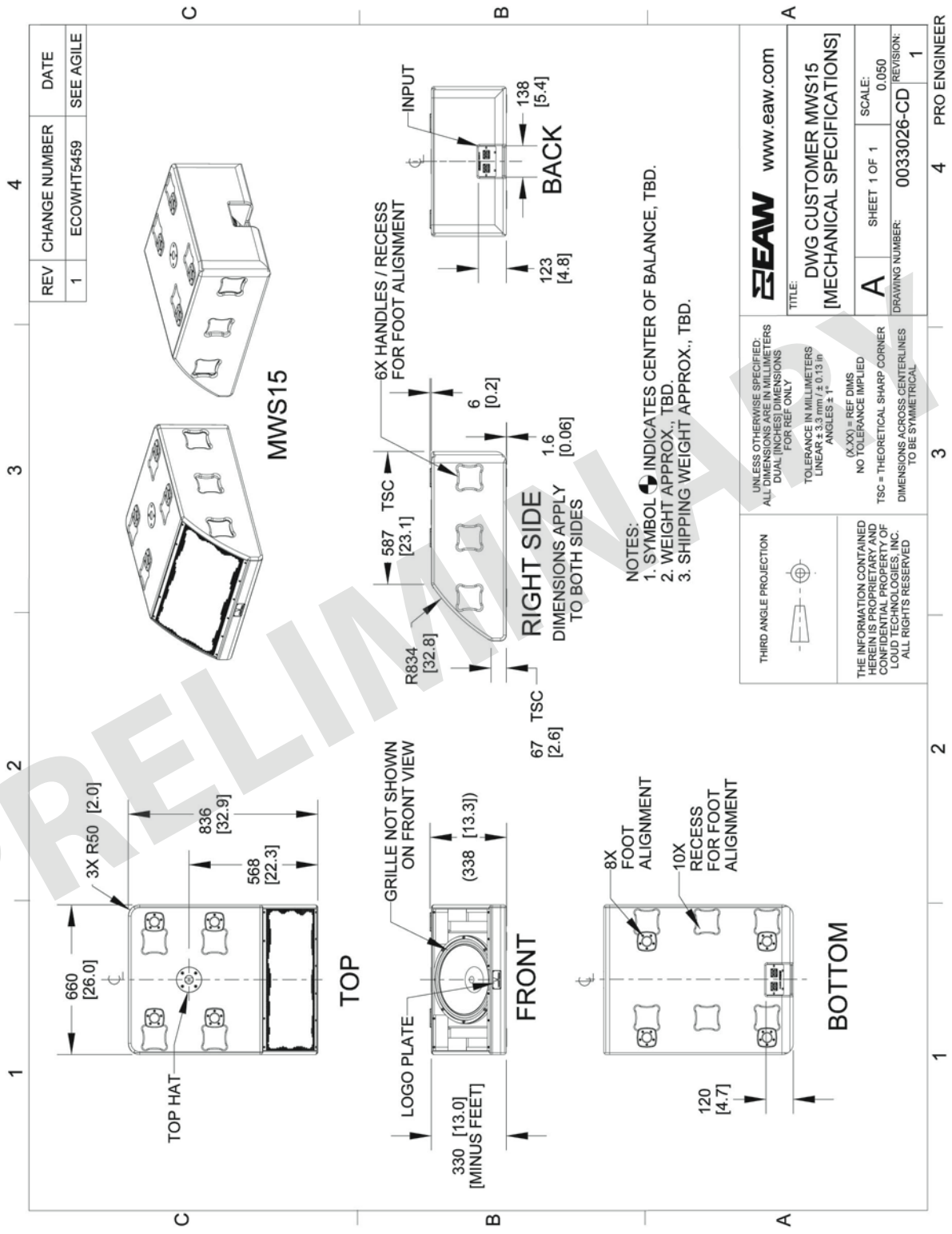
Designed to be set up on stage in a wide variety of scenarios, the MicroSub features small pads and recesses on its sides, top and bottom, which allow the MicroSub to interlock in a wide variety of configurations, by itself, with other MicroSubs and with MW12 and MW15 units. The basis of the design is in the fact that the loudspeaker is mounted at a 45-degree angle and that the cabinet height is exactly half of the cabinet width when the MicroSub is laid flat. These features allow the MicroSub to be configured in a huge range of different combinations while maintaining the familiar MicroWedge look.

<sup>1</sup> To achieve specified performance, the listed external signal processing with EAW-provided settings is required.

<sup>2</sup> For recommendations to select power amplifier size refer to: "HOW MUCH AMPLIFIER POWER DO I NEED?" on the EAW web site.

**ENCLOSURE**

Material Baltic birch plywood  
 Finish RoadCoat™ wear resistant textured black paint  
 Grille Powder-coated perforated steel

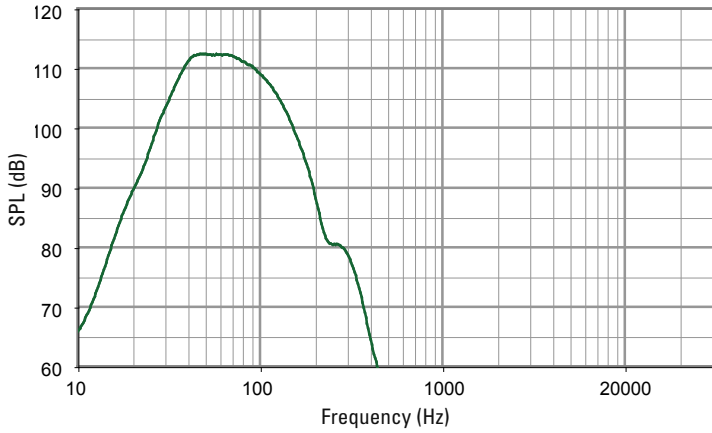


**PERFORMANCE DATA**

See NOTES GRAPHIC DATA for details

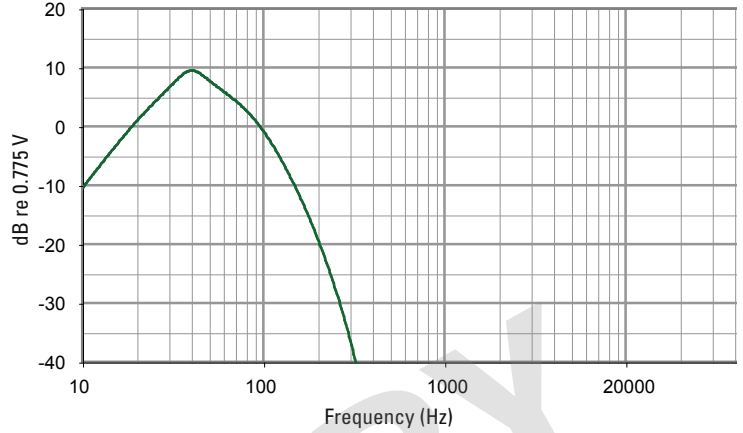
**FREQUENCY RESPONSE: PROCESSED SINGLE-AMP**

LF = green



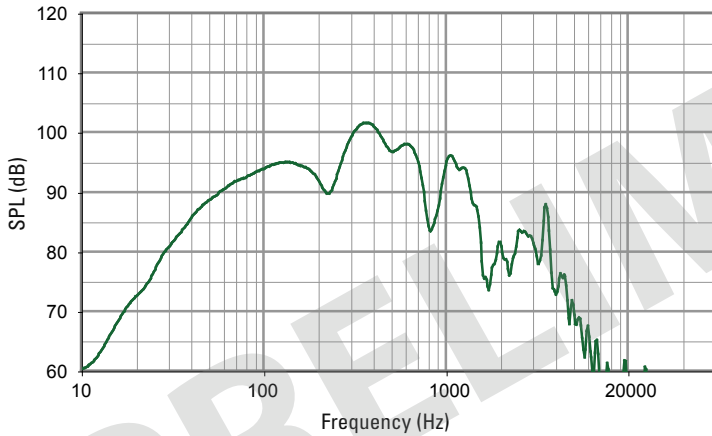
**FREQUENCY RESPONSE: DIGITAL SIGNAL PROCESSOR**

LF = green



**FREQUENCY RESPONSE: UNPROCESSED**

LF = green



**IMPEDANCE MAGNITUDE**

LF = green

